



**IT'S
TIME!
BE A
PLAYER**





STEP 1 ADVANTAGES OF IBERCUP



FORMAT

- Different Tournaments
- Different Level
- Different Time of the year
- Different Destinations



ADMINISTRATIVE

- Variable options
- Maintain only a single communication channel.
- Reservation Management



ADVISORS

- Understand what the team are looking for
- Point in the right direction
- Deliver the best service and experience
- Fulfill the teams expectations



INTERNATIONAL NETWORKING

- Access to international clubs
- Individual programs for the players
- Coaching education

STEP 2 CHOOSE YOUR TOURNAMENT

Join the Elite

Play with the World's Best Football Academies!

If you are looking for a tournament with a high level of competition, with some chances of facing some of the best clubs in the world, the tournaments listed below, will be perfect for you.

Suitable for teams that are looking to:

- Play a very competitive international tournament
- For the opportunity to play with some of the best clubs of the world
- To expose their players to a different level
- To take their players out of their safety zone (Take the game to a level Up)
- If the team is not at the top level, we can offer these teams the possibility to start in the group stage instead of starting in the Elite Groups. If the teams qualify from the group stage to the Gold Playoff then they will be able to play with the TOP Clubs in the knockout stage!



SOUTH AFRICA



CASCAIS



SÃO PAULO



Step onto the Big Stage

The IberCup Showcase!

IberCup opens its doors to coaches from prestigious U.S. universities. They're coming to observe, meet, and potentially offer scholarships to standout players. It's a direct line for young athletes to pursue education and football in the U.S. The focus of this unprecedented showcase will be on the older age categories, Boys and Girls. Young athletes in these groups will have the unique chance to demonstrate their skills, commitment, and potential directly to scouts who represent the next step in their football and academic careers.

Perfect for teams interested in:

- U.S. Scholarships: Older age groups have a special opportunity to attract attention from U.S. coaches for scholarships.
- International Tournament: Ideal for those looking for worldwide competition.
- Global Exposure: Others a chance to face teams from all over.
- More Than Just Games: Includes friendly matches and practice sessions in Cascais.
- Family-Friendly: Merge tournament participation with a family vacation in one of Portugal's prime destinations.



**ESTORIL
SHOWCASE**



**RIO DE
JANEIRO**



BARCELONA



CHINA



Experience the Magic of Football

Discover the Ultimate Football Holiday Experience!

Pack your bags for an unforgettable tournament where the passion for football meets the adventure of travel.

Experience the joy of playing in a truly international setting while making unforgettable memories in some of the most sought-after vacation spots around the world. Perfect for those seeking a tournament that balances competitive play with a family friendly atmosphere.

Suitable for players that are looking to:

- Compete in an international tournament
- Play against clubs from across the globe
- Combine the competition with a family holiday
- Explore popular tourist attractions
- Experience the amazing Christmas Atmosphere during the tournament



CHRISTMAS



Registrations are now open. We expect spots to fill up fast, so don't wait to sign up. If the maximum enrollment of teams is reached before the deadline for registrations, registrations will close before the scheduled date.



SOUTH AFRICA



12 - 16 DEC 2024



STADIUM TOUR
FNB STADIUM

DEADLINE FOR REGISTRATIONS: 15 OCT



CHRISTMAS



18 - 21 DEC 2024



STADIUM TOUR
ESTÁDIO DA LUZ

DEADLINE FOR REGISTRATIONS: 15 OCT



CASCAIS



17 - 20 APR 2025



STADIUM TOUR
**ESTÁDIO DA LUZ
JOSE ALVALADE**

DEADLINE FOR REGISTRATIONS: 15 JAN



**ESTORIL
SHOWCASE**



01 - 06 JUL 2025



STADIUM TOUR
ESTÁDIO DA LUZ

DEADLINE FOR REGISTRATIONS: 01 APR



BARCELONA



08 - 11 JUL 2025



STADIUM TOUR
CAMP NOU

DEADLINE FOR REGISTRATIONS: 01 APR



**RIO DE
JANEIRO**



14 - 20 JUL 2025



STADIUM TOUR
MARACANÃ

DEADLINE FOR REGISTRATIONS: 01 APR



SÃO PAULO



21 - 27 JUL 2025



STADIUM TOUR
**NEO QUÍMICA
ARENA**

DEADLINE FOR REGISTRATIONS: 01 MAY



CHINA



COMING SOON

STEP 3 SEE THE AVAILABLE CATEGORIES

CATEGORIES	SOUTH AFRICA			CHRISTMAS			CASCAIS			ESTORIL			BARCELONA			RIO JANEIRO			SÃO PAULO			CHINA		
	7v7	9v9	11v11	7v7	9v9	11v11	7v7	9v9	11v11	7v7	9v9	11v11	7v7	9v9	11v11	7v7	9v9	11v11	7v7	9v9	11v11	7v7	9v9	11v11
BOYS 2018																								
BOYS 2017																								
BOYS 2016																								
BOYS 2015																								
BOYS 2014																								
BOYS 2013																								
BOYS 2012																								
BOYS 2011																								
BOYS 2010																								
BOYS 2009																								
BOYS 2008																								
BOYS 2007																								
BOYS 2006																								
GIRLS 2016																								
GIRLS 2015																								
GIRLS 2014																								
GIRLS 2013																								
GIRLS 2012																								
GIRLS 2011																								
GIRLS 2010																								
GIRLS 2009																								
GIRLS 2008																								
GIRLS 2007																								
GIRLS 2006																								



STEP 4 UNDERSTAND THE COMPETITION FORMAT



NATURAL AND ARTIFICIAL TURF FIELDS

Depending on the location of our tournaments the type of fields can change



INTERNATIONAL REFEREES

An average of 30 different nations of referees are present



MINIMUM 4 MATCHES GUARANTEED

Up to 6 or 7 matches depending how the team progresses in the competition



LEAGUE SYSTEM IN THE FIRST ROUND

Teams will meet each other in the group stage playing in a round-robin series



PLAYOFFS IN THE FINAL ROUND

The best teams qualify to the Gold Playoff's and usually the rest of the teams will qualify either to Silver or Bronze Playoff's



PLAYING PERIOD

2 x 25 in halves on 11v11 matches
2 x 20 in halves on 7v7 - 8v8 - 9v9 matches

STEP 5 WHAT'S INCLUDED



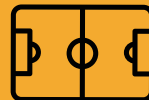
**HOTEL
ACCOMMODATION**
Tourist Taxes Included



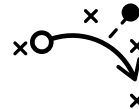
3 MEALS / DAY



PRIVATE BUS



**ACADEMY TRAINING
SESSIONS**



TEAM TRAINING SESSION
Only available for packages from 9 nights



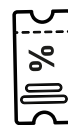
FRIENDLY MATCH
Only available for packages from 9 nights



FOOTLAB EXPERIENCE
Only available in certain tournaments



**24/HOURS
EMERGENCY SUPPORT**



**DISCOUNT ON SOME
TOURIST ATTRACTION**
Only available in certain tournaments



LEADERS MATCH
Only available in certain tournaments



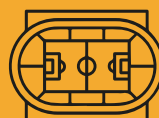
**WATER FOR THE
TOURNAMENT MATCHES**
Must bring your own bottle



LOCAL GUIDES



**CULTURAL
SIGHTSEEING**



STADIUM TOUR



**MEDICAL
ASSISTANCE ONSITE**



**TROPHIES FOR
THE WINNERS**



**MEDALS FOR ALL
THE PARTICIPANTS**



**STAFF IN
THE FIELDS**



LEADERS COCKTAIL
Only available in certain tournaments



**ONLINE RESULTS,
STANDING AND
PLAYERS PROFILES**

STEP 6 FLIGHTS



ESTIMATED GROUP AIRFARE PRICING FOR A GROUP OF 10+ TRAVELERS = 1,500€ PP.

This price quote is calculated based on the estimated number of paying passengers traveling. This price quote is valid for 30 days from receipt and is dependent upon the final number of travelers. Group Flight Rate requires a minimum of 10 ticketed travelers. **All Airport taxes are included. This price is only available for persons that hire the IberCup package.**

STEP 7 ADDITIONAL HIGHLIGHTS



RANKINGS

Teams, players and coaches have the opportunity to enter the IberCup Ranking! Improve your position and win fantastic prizes!



MANAGER YOUR PLAYER

Allows the player and their standings to appear on the match statistics, to show all the data in the ranking table, and access to different profile functions.

STEP 8 INTERNATIONAL OPPORTUNITIES

PATHWAY FOR COLLEGE IN USA



COLLEGE SCHOLARSHIP

Participate in our 10 Annual Showcase attended by College Coaches that travel internationally



GAP YEAR IN EUROPE

Play in the official leagues in Portugal during a 9-Month European season



SCOUTING

Possibility to be seen by TOP International Clubs Scouts



PLAY IN EUROPE

Get invited to sign for one of our partner clubs in Europe in the future



TRYOUT IN IBERCUP PARTNERS CLUBS

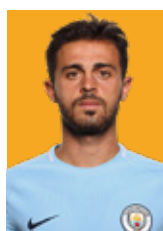
Apply to this opportunity to access our partner clubs inside our network platform in Europe



FREQUENT SCOUTING CLUBS IN IBERCUP



PLAYERS IN IBERCUP TO BIG CLUBS



BERNARDO SILVA
IBERCUP 2010
Manchester City F.C.



JOÃO PALHINHA
IBERCUP 2010
FC Bayern München



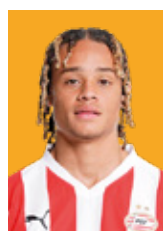
RUBEN DIAS
IBERCUP 2012
Manchester City F.C.



RAFAEL LEÃO
IBERCUP 2014
AC Milan



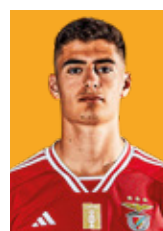
GONÇALO RAMOS
IBERCUP 2016
Paris Saint-Germain F.C.



XAVI SIMONS
IBERCUP 2016
RB Leipzig



JOÃO NEVES
IBERCUP 2018
Paris Saint-Germain F.C.



ANTÓNIO SILVA
IBERCUP 2018
S.L. Benfica

PLAYERS PATHWAY

PATHWAY TO PRO IN EUROPE

SCOUTING

Possibility to be seen by TOP International Clubs Scouts that will attend our Events and work closely with IberCup to identify international prospects.

TRYOUT IN IBERCUP PARTNERS CLUBS

The best players that are part of the IberSelect Teams can apply to this opportunity to access our partner clubs inside our network platform in Europe during a certain period of time. They can be identified at any age to be selected in future to sign for these international clubs following the FIFA rules.

PLAY IN EUROPE

Only players that went through the entire process of IberSelect and Tryout in Europe can be eligible to be invited to sign for one of our partner clubs in Europe in the future. This opportunity can be with an annual cost for the player or offered with full or partial sponsorship depending on the level of the player. If the player has a very high level the club can offer a professional contract.

PATHWAY FOR COLLEGE IN USA

COLLEGE SCHOLARSHIP

The players that will be scouted to our IberSelect teams to participate in our ID Annual Showcase playing in the IberCup Estoril Showcase tournament held in Portugal during July are eligible for this opportunity. This Event will be attended by College Coaches that travel internationally to work with IberCup to recruit international prospects.

GAP YEAR IN EUROPE

For players that aspire to play college soccer, but are considering the possibility of taking a gap year after high school, we can offer the opportunity to continue to develop in a high-level environment and also gain valuable skills playing in the official leagues in Portugal during a 9-Month European season. When the season ends they will take part in our ID Annual Showcase in IberCup Estoril.

IBERSELECT NATIONAL CAMP

The National Camp is a unique opportunity for invited players to train and be scouted to our IberSelect National team to represent USA in the IberCup Elite competition held in Portugal during Easter

IBERSELECT REGIONAL TEAMS

The Top players from each state in that region will be chosen by the IberSelect Regional coordinators after they participate in one of our IberCup tournaments representing their IberCup state teams.

IBERSELECT STATE TEAMS

A player can be invited into the state teams from an IberCup scout or ambassador of the state, a club ambassador DOC or in some cases through the tryout process.

TEAMS PARTICIPATION

Take part with your team in one of our IberCup tournaments and get notice by our Scouting Staff to be part of our IberSelect Teams Program.



**TRAINING SESSION
IN THE ACADEMIES
OF MAJOR
EUROPEAN CLUBS**



**VISITS TO
EMBLEMATIC
STADIUMS**

TESTIMONIALS



"IberCup Madrid and Cascais were the best tournaments we have ever attended. The organization, fields and competition were all top-notch. Our players got to compete against topflight European academies and experience football at an incredibly high level. This is why we came back in 2023. I am so impressed by Filipe and the organization."

Kit M. - Hawai - USA



"We got the chance to compete in one of the IberCup elite tournaments and play against strong opposition and high-quality teams from all over the world. It was a sensational tournament and our players learned a lot!"

Tiago Pina - Coach of S.L. Benfica



"The trip to Portugal and Spain was an unparalleled experience for my son and myself! My son will benefit enormously from football and personal growth from this trip and we are eternally grateful to IberCup for this opportunity. Both places are amazing destinations to combine a football tournament and family vacations. Overall, we really couldn't be happier."

Darren Yates VIC - Australia



ESTORIL SHOWCASE

01 - 06 JUL 2025



CHECK THE BEST ACCOMMODATION FOR YOU

ACCOMMODATION 6 NIGHTS

ACCOMMODATION DATES:
01 JUL - 07 JUL 2025

Please note that the options for room distribution will not be available in all of our tournaments. During the registration process, you will be informed if the option you are looking at will be available or not.



SINGLE ROOM

Accommodation for 1 person
• 1 Individual bed



COACH

\$2800

OR



ACCOMPANYING PEOPLE

\$2600



TWIN ROOM

Accommodation for 2 persons
• 2 Individual beds or 1 double bed



PLAYER OR COACH

\$2200

OR



1st & 2nd ACCOMPANYING PEOPLE

\$2000



TRIPLE ROOM

Accommodation for 3 persons
• 2 Individual beds + 1 Extra bed (190x80cm)
• 1 double bed + 1 Extra bed (190x80cm)



PLAYER OR COACH

\$2200

OR



1st & 2nd ACCOMPANYING PEOPLE

\$2000



QUAD ROOM FAMILY ROOM*

Accommodation for 4 persons
• 2 Individual beds + 1 Extra bed (190x80cm)
• + 1 individual pullout bed sofa
• 1 double bed + 1 Extra bed (190x80cm)
• + 1 individual pullout bed sofa



PLAYER OR COACH

\$2200

OR



1st & 2nd ACCOMPANYING PEOPLE

\$2000



3rd & 4th ACCOMPANYING PEOPLE

\$1900

* Quad Rooms are only available upon request and if the organization confirms that the hotel has this option available. If a family of 4 people takes 2 or more rooms instead, the costs will be applied according to the type of rooms that are chosen.



MULTI-ROOM APARTMENT*

Accommodation for 5 or 6 persons
• 1st room - 2 Individual beds
• 2nd room - 1 double bed
• Living room - 1 pullout bed sofa or extra beds



PLAYER OR COACH

\$2200

OR



1st & 2nd ACCOMPANYING PEOPLE

\$2000



3rd, 4th & 5th ACCOMPANYING PEOPLE

\$1900

* Multi Rooms Apartments are in specific hotels and not available in all of our tournaments. They can be requested and the organization will confirm or not if this option is available. If a family of 4 or more people takes 2 or more rooms instead, the costs will be applied according to the type of rooms that are chosen.



ITINERARY

DAY 1 - 01 JUL 2025

ARRIVAL DAY
AIRPORT TRANSFER LISBON TO THE HOTEL
AFTERNOON - CHECKIN AT THE HOTEL
OPENING CEREMONY

DAY 2 - 02 JUL 2025

TOURNAMENT STARTS
GROUP STAGE
SIGHTSEEING IN BELÉM

DAY 3 - 03 JUL 2025

GROUP STAGE
SIGHTSEEING IN SINTRA

DAY 4 - 04 JUL 2025

PLAYOFF STAGE
SIGHTSEEING IN LISBOA
LEADERS MATCH
LEADERS COCKTAIL

DAY 5 - 05 JUL 2025

PLAYOFF STAGE
FINALS
FREE TIME

DAY 6 - 06 JUL 2025

PLAYOFF STAGE
FINALS

PRIZE CEREMONY

TRAINING SESSION IN THE SL BENFICA ACADEMY
(APPROXIMATELY 01:30H TRAINING SESSION WITH THE SL BENFICA ACADEMY COACHES)
VISIT TO THE SL BENFICA STADIUM
AFTERNOON - DINNER AT THE HOTEL

DAY 7 - 07 JUL 2025

CHECK OUT WITH BREAKFAST INCLUDED
AIRPORT TRANSFER
RETURN TRIP

CATEGORIES

	7/7	9/9	11/11		7/7	9/9	11/11
BOYS 2017	●	●	●	GIRLS 2015	●	●	●
BOYS 2016	●	●	●	GIRLS 2014	●	●	●
BOYS 2015	●	●	●	GIRLS 2013	●	●	●
BOYS 2014	●	●	●	GIRLS 2012	●	●	●
BOYS 2013	●	●	●	GIRLS 2011	●	●	●
BOYS 2012	●	●	●	GIRLS 2010	●	●	●
BOYS 2011	●	●	●	GIRLS 2009	●	●	●
BOYS 2010	●	●	●	GIRLS 2007	●	●	●
BOYS 2009	●	●	●				
BOYS 2008	●	●	●				
BOYS 2006	●	●	●				



The final itinerary may be slightly different from this program, and will be determined based on the match calendar and other variables. The final itinerary can be moved based on suppliers availability and pro game schedules. If additional matches during the tournament are required, then some sightseeing and scheduled activities will be replaced.

IMPORTANT INFO ON MEALS ON THE OPENING CEREMONY DAY

On the first day of the tournament, there will be no dinner included in all the accommodation options. Foodtrucks will be available onsite that day.

IMPORTANT INFO ON MEALS ON THE FINAL DAY

On the final day of the tournament, the lunch will be available only on the stadium where the finals take place between 11:30am and 1:30pm.



BARCELONA

08 JUL - 11 JUL 2025



TRAINING SESSION



STADIUM TOUR
CAMP NOU

CHECK THE BEST ACCOMMODATION FOR YOU

ACCOMMODATION 6 NIGHTS

ACCOMMODATION DATES:
06 JUL - 12 JUL 2025

Please note that the options for room distribution will not be available in all of our tournaments. During the registration process, you will be informed if the option you are looking at will be available or not.



SINGLE ROOM

Accommodation for 1 person
• 1 Individual bed



COACH

\$2800

OR



ACCOMPANYING PEOPLE

\$2600



TWIN ROOM

Accommodation for 2 persons
• 2 Individual beds or 1 double bed



PLAYER OR COACH

\$2200

OR



1st & 2nd ACCOMPANYING PEOPLE

\$2000



TRIPLE ROOM

Accommodation for 3 persons
• 2 Individual beds + 1 Extra bed (190x80cm)
• 1 double bed + 1 Extra bed (190x80cm)



PLAYER OR COACH

\$2200

OR



1st & 2nd ACCOMPANYING PEOPLE

\$2000



QUAD ROOM FAMILY ROOM*

Accommodation for 4 persons
• 2 Individual beds + 1 Extra bed (190x80cm)
• + 1 individual pullout bed sofa
• 1 double bed + 1 Extra bed (190x80cm)
• + 1 individual pullout bed sofa



PLAYER OR COACH

\$2200

OR



1st & 2nd ACCOMPANYING PEOPLE

\$2000



3rd & 4th ACCOMPANYING PEOPLE

\$1900



MULTI-ROOM APARTMENT*

Accommodation for 5 or 6 persons
• 1st room - 2 Individual beds
• 2nd room - 1 double bed
• Living room - 1 pullout bed sofa
or extra beds



PLAYER OR COACH

\$2200

OR



1st & 2nd ACCOMPANYING PEOPLE

\$2000



3rd, 4th & 5th ACCOMPANYING PEOPLE

\$1900



KNOW WHAT'S INCLUDED IN YOUR PACKAGE AS A PLAYER AND AS ACCOMPANYING PEOPLE

ACCOMMODATION

✓ **HOTEL ACCOMMODATION**
MINIMUM 4**** HOTEL (TOURIST TAXES INCLUDED)

✓ **3 MEALS PER DAY**
ALL THE MEALS AT THE ACCOMMODATION
ARRIVAL - WITH DINNER INCLUDED
DEPARTURE - WITH BREAKFAST INCLUDED

TRANSPORTATION

✓ **PRIVATE BUS**
GROUND TRANSPORTATION TO AND FROM ALL THE ACTIVITIES
IF YOUR GROUP IS TRAVELING WITH LESS THAN 40 PEOPLE, YOU NEED TO ADD TO THE COST
FINAL THIS COST PER MISSING PERSON UNTIL IT REACHES 40 PEOPLE: 250€

✓ **AIRPORT TRANSFERS**
ONE TRANSFER ON THE ARRIVAL / ONE TRANSFER ON THE DEPARTURE

SOCCER ACTIVITIES

✓ **1 ACADEMY TRAINING SESSIONS**
RCD ESPANYOL ACADEMY OR FC BARCELONA ACADEMY

SUPPORT

✓ **24/HOURS EMERGENCY SUPPORT**

✓ **LOCAL GUIDES**
ONE ACCOMPANYING GUIDE PER CLUB FLUENT IN ENGLISH, FRENCH,
SPANISH OR PORTUGUESE

✓ **STAFF IN THE FIELDS**

SIGHTSEEING AND OTHER ACTIVITIES

✓ **CULTURAL SIGHTSEEING**

✓ **1 STADIUM TOUR**
BEHIND THE SCENES: RCD ESPANYOL STADIUM OR FC BARCELONA STADIUM

✓ **DISCOUNTS ON SOME TOURIST ATTRACTION**

NOT INCLUDED

✗ **POSSIBLE PROFESSIONAL LEAGUE MATCH**
TICKETS FOR THESE MATCHES WILL HAVE AN EXTRA COST AND IS SUBJECT TO AVAILABILITY BY THE TIME OF
THE GROUP'S CONFIRMATION

✗ **PLAYERS INSURANCE**
MAKE SURE YOUR PLAYERS ARE COVERED INSIDE
AND OUTSIDE THE FIELD

✗ **FLIGHTS**

✗ **LAUNDRY** ✗ **WARM UP MATCH BALLS**
THE ORGANIZATION DOES NOT PROVIDE MATCH BALLS FOR WARMING UP.
TEAMS THAT WISH TO PURCHASE BALLS, PLEASE CONTACT US.

✗ **EVERYTHING THAT ITS NOT DESCRIBED
IN THE PROGRAM**



ITINERARY

DAY 1 - 06 JUL 2025

ARRIVAL DAY

AIRPORT TRANSFER BARCELONA TO THE HOTEL

AFTERNOON - CHECKIN AT THE HOTEL

- FREE TIME

- DINNER AT THE HOTEL

DAY 2 - 07 JUL 2025

MORNING - BREAKFAST AT THE HOTEL

- **TRAINING SESSION IN THE FC BARCELONA ACADEMY**
(APPROXIMATELY 01:30H TRAINING SESSION WITH THE FC BARCELONA
ACADEMY COACHES)

AFTERNOON - LUNCH AT THE FC BARCELONA ACADEMY

- **VISIT TO THE FC BARCELONA STADIUM**

- FREE TIME

- DINNER AT THE HOTEL

DAY 3 - 08 JUL 2025

TOURNAMENT STARTS

GROUP STAGE

SIGHTSEEING IN COSTA BRAVA

DAY 4 - 09 JUL 2025

GROUP STAGE

SIGHTSEEING IN COSTA BRAVA

DAY 5 - 10 JUL 2025

PLAYOFF STAGE

SIGHTSEEING IN COSTA BRAVA

LEADERS MATCH

LEADERS COCKTAIL

DAY 6 - 11 JUL 2025

PLAYOFF STAGE

FINALS

PRIZE CEREMONY

DAY 7 - 12 JUL 2025

CHECK OUT WITH BREAKFAST INCLUDED

AIRPORT TRANSFER BARCELONA

RETURN TRIP

CATEGORIES

	7/7	9/9	11/11		7/7	9/9	11/11
BOYS 2016	●	●	●	GIRLS 2014	●	●	●
BOYS 2015	●	●	●	GIRLS 2012	●	●	●
BOYS 2014	●	●	●	GIRLS 2010	●	●	●
BOYS 2013	●	●	●	GIRLS 2007	●	●	●
BOYS 2012	●	●	●				
BOYS 2011	●	●	●				
BOYS 2010	●	●	●				
BOYS 2009	●	●	●				
BOYS 2007	●	●	●				



The final itinerary may be slightly different from this program, and will be determined based on the match calendar and other variables. The final itinerary can be moved based on suppliers availability and pro game schedules. If additional matches during the tournament are required, then some sightseeing and scheduled activities will be replaced.



ESTORIL — 01 - 06 JUL 2025



BARCELONA — 08 - 12 JUL 2025



CHECK THE BEST ACCOMMODATION FOR YOU

ACCOMMODATION **11** NIGHTS

ACCOMMODATION DATES ESTORIL:

01 JUL - 07 JUL 2025

ACCOMMODATION DATES BARCELONA:

07 JUL - 12 JUL 2025

Please note that the options for room distribution will not be available in all of our tournaments. During the registration process, you will be informed if the option you are looking at will be available or not.



SINGLE ROOM

Accommodation for 1 person
• 1 Individual bed



COACH

\$4500

OR



ACCOMPANYING PEOPLE

\$4100



TWIN ROOM

Accommodation for 2 persons
• 2 Individual beds or 1 double bed



PLAYER OR COACH

\$3600

OR



1st & 2nd ACCOMPANYING PEOPLE

\$3200



TRIPLE ROOM

Accommodation for 3 persons
• 2 Individual beds + 1 Extra bed (190x80cm)
• 1 double bed + 1 Extra bed (190x80cm)



PLAYER OR COACH

\$3600

OR



1st & 2nd ACCOMPANYING PEOPLE

\$3200



QUAD ROOM FAMILY ROOM*

Accommodation for 4 persons
• 2 Individual beds + 1 Extra bed (190x80cm)
• + 1 individual pullout bed sofa
• 1 double bed + 1 Extra bed (190x80cm)
• + 1 individual pullout bed sofa



PLAYER OR COACH

\$3600

OR



1st & 2nd ACCOMPANYING PEOPLE

\$3200



3rd & 4th ACCOMPANYING PEOPLE

\$3100

* Quad Rooms are only available upon request and if the organization confirms that the hotel has this option available. If a family of 4 people takes 2 or more rooms instead, the costs will be applied according to the type of rooms that are chosen.



MULTI-ROOM APARTMENT*

Accommodation for 5 or 6 persons
• 1st room - 2 Individual beds
• 2nd room - 1 double bed
• Living room - 1 pullout bed sofa or extra beds



PLAYER OR COACH

\$3600

OR



1st & 2nd ACCOMPANYING PEOPLE

\$3200



3rd, 4th & 5th ACCOMPANYING PEOPLE

\$3100

* Multi Rooms Apartments are in specific hotels and not available in all of our tournaments. They can be requested and the organization will confirm or not if this option is available. If a family of 4 or more people takes 2 or more rooms instead, the costs will be applied according to the type of rooms that are chosen.

KNOW WHAT'S INCLUDED IN YOUR PACKAGE AS A PLAYER AND AS ACCOMPANYING PEOPLE

ACCOMMODATION

HOTEL ACCOMMODATION
MINIMUM 4**** HOTEL (TOURIST TAXES INCLUDED)

3 MEALS PER DAY

ESTORIL
BREAKFAST AND DINNER AT THE ACCOMMODATION / LUNCH AT THE MEAL CENTER
ARRIVAL - NO MEALS ARE INCLUDED 1st MEAL (ON THE DAY AFTER THE ARRIVAL (BREAKFAST) INCLUDED
DEPARTURE - WITH BREAKFAST INCLUDED

BARCELONA
ALL THE MEALS AT THE ACCOMMODATION
ARRIVAL - WITH DINNER INCLUDED
DEPARTURE - WITH BREAKFAST INCLUDED

TRANSPORTATION

PRIVATE BUS

GROUND TRANSPORT TO AND FROM ALL THE ACTIVITIES
IF YOUR GROUP IS TRAVELING WITH LESS THAN 40 PEOPLE, YOU NEED TO ADD TO THE COST
FINAL THIS COST PER MISSING PERSON UNTIL IT REACHES 40 PEOPLE: 250€

AIRPORT TRANSFERS

ONE TRANSFER ON THE ARRIVAL / ONE TRANSFER ON THE DEPARTURE

SOCCER ACTIVITIES

1 ACADEMY TRAINING SESSIONS
SL BENFICA ACADEMY OR SPORTING CP ACADEMY

SUPPORT

24/HOURS EMERGENCY SUPPORT

LOCAL GUIDES

ONE ACCOMPANYING GUIDE PER CLUB FLUENT IN ENGLISH, FRENCH, SPANISH OR PORTUGUESE

STAFF IN THE FIELDS

SIGHTSEEING AND OTHER ACTIVITIES

CULTURAL SIGHTSEEING

1 STADIUM TOUR

BEHIND THE SCENES: SL BENFICA STADIUM OR SPORTING CP STADIUM

DISCOUNTS ON SOME TOURIST ATTRACTION

LEADERS MATCH

ESTORIL

LEADERS COCKTAIL

ESTORIL

NOT INCLUDED

POSSIBLE PROFESSIONAL LEAGUE MATCH

TICKETS FOR THESE MATCHES WILL HAVE AN EXTRA COST AND IS SUBJECT TO AVAILABILITY BY THE TIME OF THE GROUP'S CONFIRMATION

PLAYERS INSURANCE

MAKE SURE YOUR PLAYERS ARE COVERED INSIDE AND OUTSIDE THE FIELD

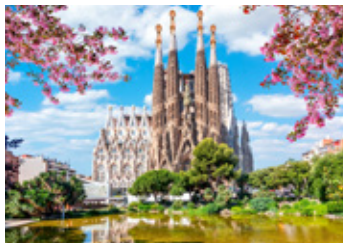
FLIGHTS

LAUNDRY

WARM UP MATCH BALLS

THE ORGANIZATION DOES NOT PROVIDE MATCH BALLS FOR WARMING UP. TEAMS THAT WISH TO PURCHASE BALLS, PLEASE CONTACT US.

EVERYTHING THAT ITS NOT DESCRIBED IN THE PROGRAM



CATEGORIES ESTORIL

	7/7	9/9	11/11		7/7	9/9	11/11
BOYS 2017	●	●	●	GIRLS 2015	●	●	●
BOYS 2016	●	●	●	GIRLS 2014	●	●	●
BOYS 2015	●	●	●	GIRLS 2013	●	●	●
BOYS 2014	●	●	●	GIRLS 2012	●	●	●
BOYS 2013	●	●	●	GIRLS 2011	●	●	●
BOYS 2012	●	●	●	GIRLS 2010	●	●	●
BOYS 2011	●	●	●	GIRLS 2009	●	●	●
BOYS 2010	●	●	●	GIRLS 2008	●	●	●
BOYS 2009	●	●	●	GIRLS 2007	●	●	●
BOYS 2008	●	●	●				
BOYS 2006	●	●	●				

CATEGORIES BARCELONA

	7/7	9/9	11/11		7/7	9/9	11/11
BOYS 2016	●	●	●	GIRLS 2014	●	●	●
BOYS 2015	●	●	●	GIRLS 2012	●	●	●
BOYS 2014	●	●	●	GIRLS 2010	●	●	●
BOYS 2013	●	●	●	GIRLS 2007	●	●	●
BOYS 2012	●	●	●				
BOYS 2011	●	●	●				
BOYS 2010	●	●	●				
BOYS 2009	●	●	●				
BOYS 2007	●	●	●				



NEXT STEPS TO CONFIRM YOUR TEAM



1 - PROPOSAL

Analyse the proposal for IberCup participation.



2 - FEEDBACK

Comeback with comments and feedback to clarify any pending details.



3 - REGISTRATION ON THE WEBSITE (CONFIRMATION)

Go to www.ibercup.com and choose your tournament.



4 - FIRST PAYMENT (CONFIRMATION)

The first payment will be deducted from the total. The first payment is not refundable.



5 - MYTEAM INFO (CONFIRMATION)

IberCup will send you the manual and tutorial video so you can start to fill in all the details from your teams.



6 - IBERCUP SOCIAL MEDIA (CONFIRMATION)

Team Confirmed. Send us a photo of your logo and from a player in action on a match so we can announce your team in the competition.



7 - 50% DEPOSIT (120 DAYS)

The 2nd deposit is based on half of the total cost from the expected number of people. If the teams don't know the exact or approximate number of final people, the rule applied in this situation is that the % is calculated based on a minimum of 25 persons for teams that play the formats 11v11 and 9v9, and 20 persons for teams that play the other formats.



8 - ROOM DISTRIBUTION (90 DAYS)

We will need the final number of rooms and type of rooms from your group.



9 - ROOMING LIST DOCUMENT (70 DAYS)

Based on the type of rooms available at the hotel and the previous requests from the team for their room distribution, you will need to fill in all the details from the rooms in our rooming list official document.



10 - FINAL PAYMENT (60 DAYS)

The teams will have only available the number of rooms that are equivalent to the deposits that will be made until this date.



11 - FLIGHT DETAILS (50 DAYS)

We will need the number of the flight, air company, origin and arrival time at the destination.



12 - ROOMING LISTS (50 DAYS)

After we get all the details from the rooms in your rooming list official document, we will send this information to the hotel.



13 - PLAYER'S REGISTRATION (50 DAYS)

All players must be registered for the competition on the My Team Info Area. We will not accept any player in the tournament after we reach this date.



14 - ONLINE PLAYER ACCREDITATION (40 DAYS)

We need to have a copy of the ID documents from each player to approve their participation. Before sending the player's documents to the organization to confirm their identification, teams must have the player's photo uploaded to their profile, so we can check the ID document with the photo on the website.



15 - TEAMS AUTHORIZATION (40 DAYS)

All foreign teams should request their football federations to send an authorization letter to IberCup (auto@ibercup.com) so they can take part in the tournament. Football schools and private football academies need to send to us an authorization letter from the board.



16 - IBERCOACH APP (30 DAYS)

Follow all the important updates, manage your team information, and access logistic details.



17 - PLAYERS' PROFILE (30 DAYS)

Individual rankings are allowed if the player is managed during the competition.



18 - INSURANCE AND RESPONSIBILITY (30 DAYS)

Each player must have medical insurance. Make sure that all your players are insured both on and off the playing



19 - PENDING PAYMENTS (30 DAYS)

All the payments received between 30 days prior to the arrival and the day that the tournament starts, will have an extra charge based on a % from the pending amount. For pending payments on the arrival we advise to check on our payment policy. It is not allowed any type of international transfers 15 days before the tournament starts.

Hotels - 25% / Schools - 10%



20 - MATCH SCHEDULE IS ON (20 DAYS)

The teams will be listed in the groups. If your team doesn't appear it means that you have pending situations to solve.



21 - VIDEO MEETING WITH THE TEAM LEADER (10 DAYS)

Don't miss the opportunity to know more about your stay and participation in the tournament. Information about regulation, logistics, and competition will be provided.



22 - SECURITY DEPOSITS (ON THE ARRIVAL)

500€ per Team / 4 or + Teams 2000€ for the entire group.

Hotel Accommodation

Upon arrival during check-in at the accommodation, a security deposit in cash or credit card is required.

This deposit will be refunded within **5 DAYS** of the departure, if the team has no incident. If the team has any serious incident or causes damage to the rooms and facilities of the accommodation, this deposit will be lost.

Tournament Incidents

30 DAYS before the start of the tournament, a security deposit is required. It will not be necessary to add this deposit in the case of accommodation in schools as it will be used for both situations.

This deposit will be refunded no later than **30 DAYS** after the end of the tournament if the team has no incident or damage to the sports facilities or transport. If the team has an incident, we will have a period of another **30 DAYS** to calculate the costs of the incidents and transfer back the difference **60 DAYS** after the end of the tournament

This deposit will be lost if we find that the cost of repairing the damage is higher than the deposit made.

Fair Play

If the team has any incident during the matches related to the behavior of the players, coaches or family members in relation to the opposing teams, opposing fans or referees, this deposit will be completely lost and legal actions can be put in place.



23 - WHERE TO GO ON THE ARRIVAL (ON THE ARRIVAL)

Get all the information before your travel to the tournament and know how to meet our official representative.



24 - FACE TO FACE ACCREDITATION (ON THE ARRIVAL)

The team manager is only authorized to carry out face-to-face accreditation to collect the team kit if the online accreditation process is completed.



2024 / 2025 TOURNAMENTS PREVIEW



IBERSELECT USA PRESENTATION



COACH DEVELOPMENT



+351918991773
info@ibercup.com